



6 MILTHORP APARTMENTS POOL ROAD POOL IN WHARFEDAILE LS21 1GG

Asking price £300,000

FEATURES

- Fantastic Light & Airy Apartment To The South East Corner Of This Stunning Riverside Building
- High Performance Glazing & Underfloor Heating Throughout
- 2 Double Bedrooms With The Principle Bedroom Having A Luxurious En-Suite
- Fantastic Fully Tiled Main Bathroom
- Superbly Appointed Kitchen Diner, Fully Integrated With Appliances
- Full Lift Access To Each Floor & Staircases
- Large Secure Storeroom & Security Video Entry System
- Private Allocated Parking To The Secure Electronic Gated Carpark
- Issued With An ICW 10 Year Warranty
- Viewing Strongly Recommended To Fully Appreciate This Special Property



Luxurious 2 Bedroom Apartment With Secure Gated Parking

Looking for a luxurious turn key apartment with secure electronic gated parking and lift access, then look no further as this is the property for you. Superbly appointed throughout and complemented by underfloor heating to each room, the apartment incorporates two double bedrooms with the principle bedroom having a smart fully tiled en-suite and then an equally smart modern house bathroom servicing the rest of the apartment. There is a spacious open plan living room with dining area and a striking modern appointed kitchen with integrated appliances included. The apartment also comes with a very useful secure storage unit located inside the building on the ground floor, ideal for bikes etc and also has an allocated private parking bay in the secure electronic gated car park. To arrange your viewing of this luxurious apartment, please contact Shankland Barraclough Estate Agents in Otley.

The accommodation with UNDERFLOOR HEATING, SEALED UNIT DOUBLE GLAZING and with approximate room sizes, comprises:

Entrance

Via a security locked outer entrance lobby, which in turn leads through to the hallway, the staircase and the elevator.

THE APARTMENT

Entrance Hallway

A long entrance hallway that provides access to each of the rooms and has underfloor heating.

Open Plan Living Area, Dining Area & Kitchen 22'5" x 15'5" (6.83m x 4.70m)

A most fabulous light and airy living space with views from every window. Located on the South East corner of the building having extra windows, the natural light just floods into this fabulous living and entertaining space. The kitchen offers a comprehensive range of stylish modern kitchen units with a central island, fully integrated with appliances including a Fridge-Freezer, Bosch oven with a combi microwave and oven over, induction hob, dishwasher and washing machine.

Bedroom 1. 13'3" x 12'7" (4.04m x 3.84m)

Underfloor heating and feature full height windows.

En-Suite

Luxurious en-suite complemented by smart modern fully tiled walls and flooring, a chrome heated towel rail and extractor. The suite includes a large walk in shower with glazed screen, a low level wc, a wash hand basin with a useful vanity cupboard below and a large mirror over.

Bedroom 2. 10'11" x 10'11" (3.33m x 3.33m)

Another good sized double bedroom with underfloor heating and a feature full height window.

Bathroom

Once again luxuriously appointed and fitted with a three piece suite comprising a bath with a large headed shower and screen over, a wash hand basin with a vanity cupboard below and a large mirror over, and finally a low level wc. Complemented by stylish fully tiled walls and flooring, a chrome heated towel rail and an extractor fan.

Secure Storage & Electronic Gated Parking

The property benefits from having its own storage room securely located off of the entrance lobby, an ideal area to store bikes etc. Externally the properties share sitting areas to make the most of that stunning outlook over the river and the countryside. This property also includes two allocated parking bays, with one having its own EV charging point to the secure electronic gated carpark.

Tenure & Services

Tenure: Leasehold - 999 Year Lease Commencing 1st Jan 2025.

Pets By Agreement of The Landlord Restrictions

Service Charge 2026 - £2963.11 per annum (£246.93 per month) which includes the cleaning / lighting / heating of communal areas, external maintenance, lift maintenance, fire alarm maintenance and window cleaning

Buildings Insurance 2026 - £666.67 per annum (£55.56 per month)

Ground Rent - Peppercorn Rent

Offered with an ICW 10 Year Warranty

Mains Electric, Water & Drainage Connected. No Gas.



26 KIRKGATE, OTLEY, WEST YORKSHIRE, LS21 3HJ

Council Tax

Leeds City Council Tax Band D. For further details on Leeds Council Tax Charges please visit www.leeds.gov.uk or telephone them on 0113 2224404.

Internet and Mobile Coverage

Independently checked information via Ofcom shows that Ultrafast Broadband up to 1800 Mbps download speed is available to this property. Mobile Phone coverage is available to the four main carriers at various levels. For further information please refer to: <https://checker.ofcom.org.uk>

Viewing Arrangements

We would be delighted to arrange a viewing for you on this property. To view, please contact Shankland Barraclough Estate Agents on (01943) 889010, e-mail us info@shanklandbarraclough.co.uk or call in to our office at 26 Kirkgate, Otley LS21 3HJ.

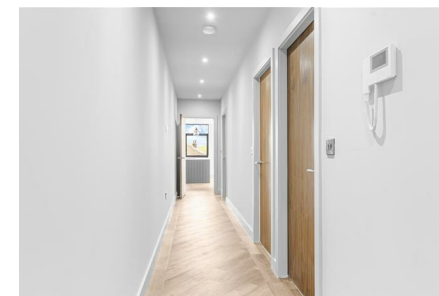
Opening Hours

Monday to Friday 9am - 5.30pm
Saturdays 9am - 4pm

Mortgage Advice

We are delighted to offer Whole of Market Mortgage advice through our relationship with T&C Independent Mortgage Advisors. To make an appointment please ring 01943 889010 and we will arrange for our advisor to help you source the most suitable mortgage for your circumstances.

The Initial consultation is free of charge and totally without obligation. A fee may then be payable if you choose to use their services.



26 KIRKGATE, OTLEY, WEST YORKSHIRE, LS21 3HJ



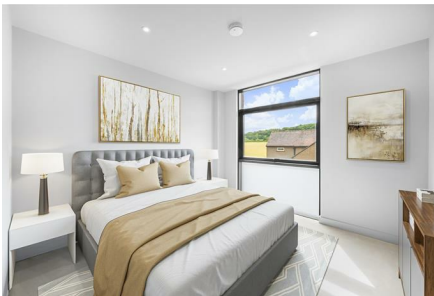
26 KIRKGATE, OTLEY, WEST YORKSHIRE, LS21 3HJ



Offer Acceptance & AML Regulations
Money Laundering, Terrorist Financing & Transfer of Funds Regulations 2017. To enable us to comply with the expanded Money Laundering Regulations we are required to obtain proof of how the property purchase is to be financed as well as identification from all prospective buyers. Buyers are asked to please assist with this so that there is no delay in agreeing a sale. The cost payable by the successful buyer(s) for this is £20 (inclusive of VAT) per named buyer and is paid to the firm that administers the money laundering ID checks, Movebutler. Please note the property will not be marked as sold subject to contract until appropriate identification has been provided and all AML checks are completed.

Please Note

The extent of the property and its boundaries are subject to verification by inspection of the title deeds. The measurements in these particulars are approximate and have been provided for guidance purposes only. The fixtures, fittings and appliances have not been tested and therefore no guarantee can be given that they are in working order. The internal photographs used in these particulars are reproduced for general information and it cannot be inferred that any item is included in the sale.



Milthorp Apartments, Pool Road, Pool in Wharfedale, LS21

Approximate Gross Internal Area = 87.3 sq m / 940 sq ft



Energy Efficiency Rating		
	Current	Potential
<i>Very energy efficient - lower running costs</i>		
(92 plus) A		
(81-91) B		
(69-80) C	71	71
(55-68) D		
(39-54) E		
(21-38) F		
(1-20) G		
<i>Not energy efficient - higher running costs</i>		
England & Wales	EU Directive 2002/91/EC	

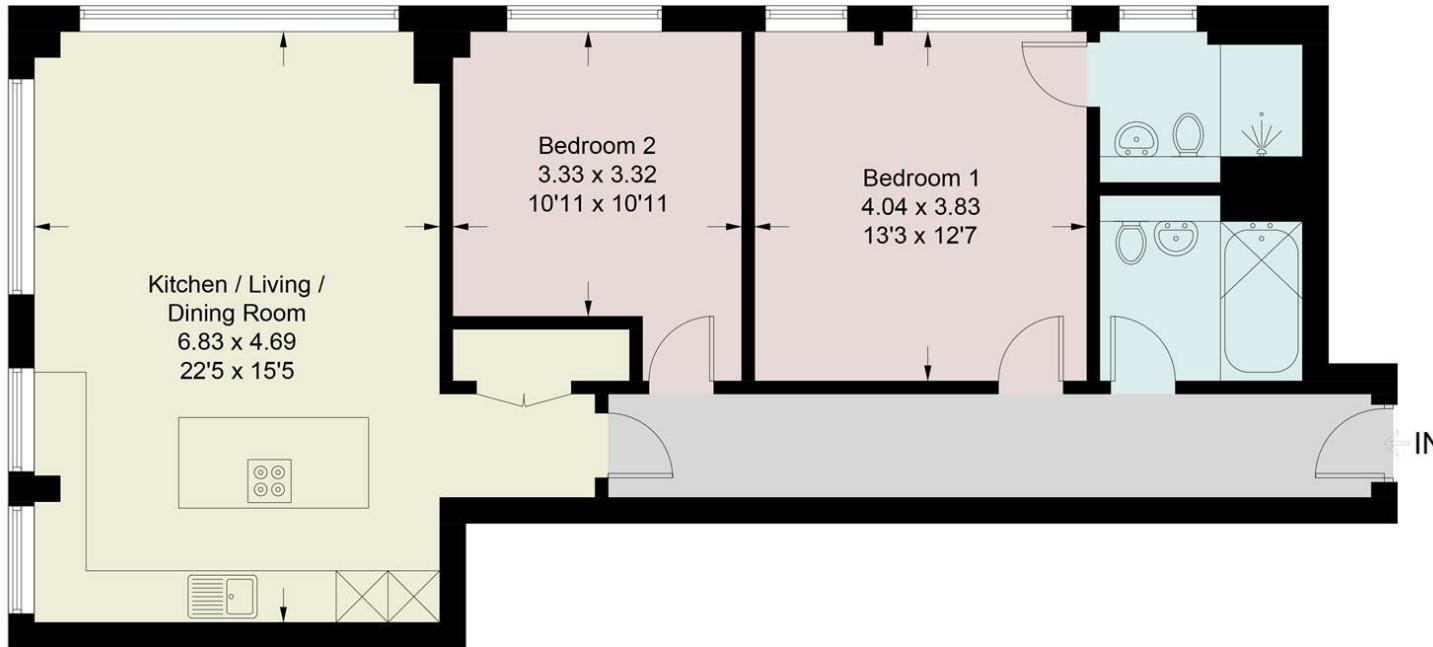


Illustration for identification purposes only, measurements are approximate, not to scale. Pursuant to RICS property measurement 2nd edition © Intelligent Property Marketing 2026

Agents Note: Whilst every care has been taken to prepare these particulars, they are for guidance purposes only. All measurements are approximate and are for general guidance purposes only and whilst every care has been taken to ensure their accuracy, they should not be relied upon and potential buyers are advised to recheck the measurements.



T: Call us on 01943 889010
E: info@shanklandbarracrough.co.uk
W: www.shanklandbarracrough.co.uk

